

A Hooker's World



Coffee Connection
by Hooker Leo

Dimensions: Target: 12 x 12 inches

The first one I made was with a size 8 needle and it ended up measuring 13.5 x 12.5 inches. This time I used a US 7, but after about 12 rows I could tell it was too wide. Size US 6 was working out well until I took it off the needles. During photography I received a measurement of 12 x 13 inches. Aiyaa!

This is a knit afghan square that I created for the a Vineyard Christian Fellowship Coffee Connection afghan, as gratitude for our gathering/meeting space. I believe the afghan shall be raffled off to patrons.

I had previously created the chocolate square – plain stockinette with seed stitch border, same yarn brand – based on the gauge printed on the yarn label and had no problems. When I created this Toast square the first time, it measured 12.5 x 13.5.

Materials

- 1 skein Red Heart Soft (1882 Toast)
- Needles: US 8-5.0 mm or size necessary to obtain gauge

Gauge

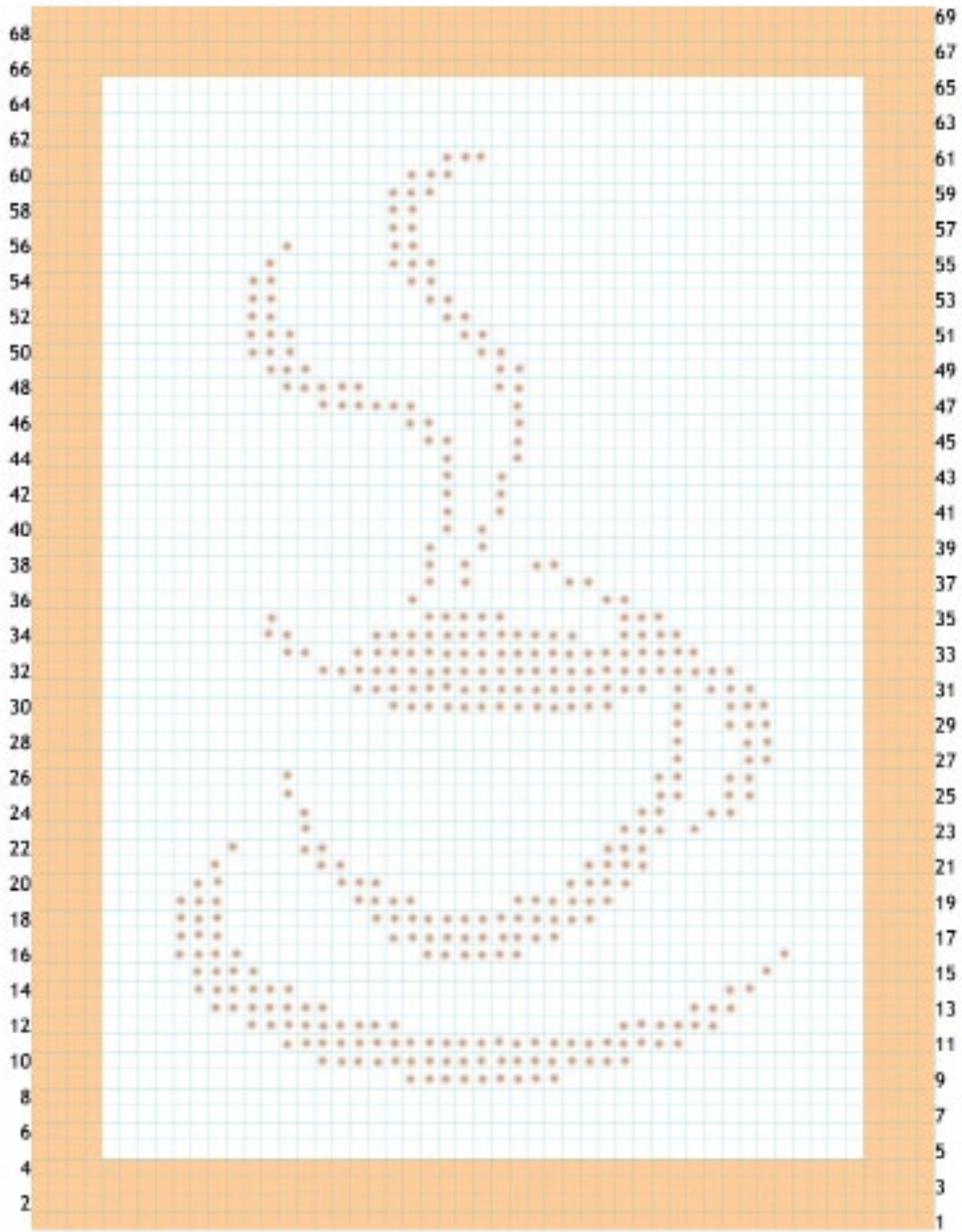
17 stitches x 23 rows = 4 in (10cm) on size US 8-5.0 mm needles

Finished Size:

12 x 12 inches

Chart on next page...

Cast on 51



- Seed Stitch, beginning with knit
- Odd Rows: Knit; Even Rows, Purl
- Odd Rows: Purl; Even Rows, Knit